

Lincolnshire County Council

Highway Asset Management Policy

Lincolnshire County Council has established a long term vision and purpose for the county, as set out below, which reflects the changing world in which we operate.

Our Vision

Lincolnshire County Council – working for a better future

- Building on our Strengths
- Protecting your lifestyle
- Ambitious for the future

Our Purpose

- Investing in infrastructure and the provision of services
- Commissioning for outcomes based on our communities needs
- Promoting community wellbeing and resilience
- Influencing, coordinating and supporting other organisations that contribute to the life of Lincolnshire
- Making best use of all our resources

The above set the context for Lincolnshire County Council's Highway Asset Management Policy.

Lincolnshire County Council recognises that the highways network and associated infrastructure plays a vital role in enabling the county to prosper and achieve its objectives. Our highways network is one of the largest in the country and comprises over 8,700km of carriageway, 4,000km of footways, 70,000 street lights, 600 signals installations and 3,000 structures. The highways asset also includes associated drainage, street furniture and road markings and has a gross replacement cost of approximately £10bn.

In order to ensure that the highways network is maintained to an appropriate standard the county council has developed this Highways Asset Management Policy and the associated strategy which are linked to the authority's purpose and relevant commissioning outcomes (below).

Sustaining and growing business and the economy

This commissioning strategy covers how the council will help businesses to be the drivers of economic growth through supporting a climate in which they are able to invest, enhance their business performance, and offer attractive jobs to a skilled workforce.

The highways network plays a vital role in the success of the Lincolnshire economy through access for goods, services, employment, education and leisure. Our asset management strategy will ensure that we maximise the benefits of our continuing investment in this vital asset.

Protecting and sustaining the environment

This commissioning strategy covers how the council will protect, enhance and balance our environmental needs.

Our asset management strategy sets out how we will make best use of our resources and through effective treatments at the right time or the use of appropriate technology we will minimise the environmental impact of our maintenance operations.

Sustaining and developing prosperity through infrastructure

This commissioning strategy facilitates growth and prosperity through encouraging investment and enhancing the economic potential of the county.

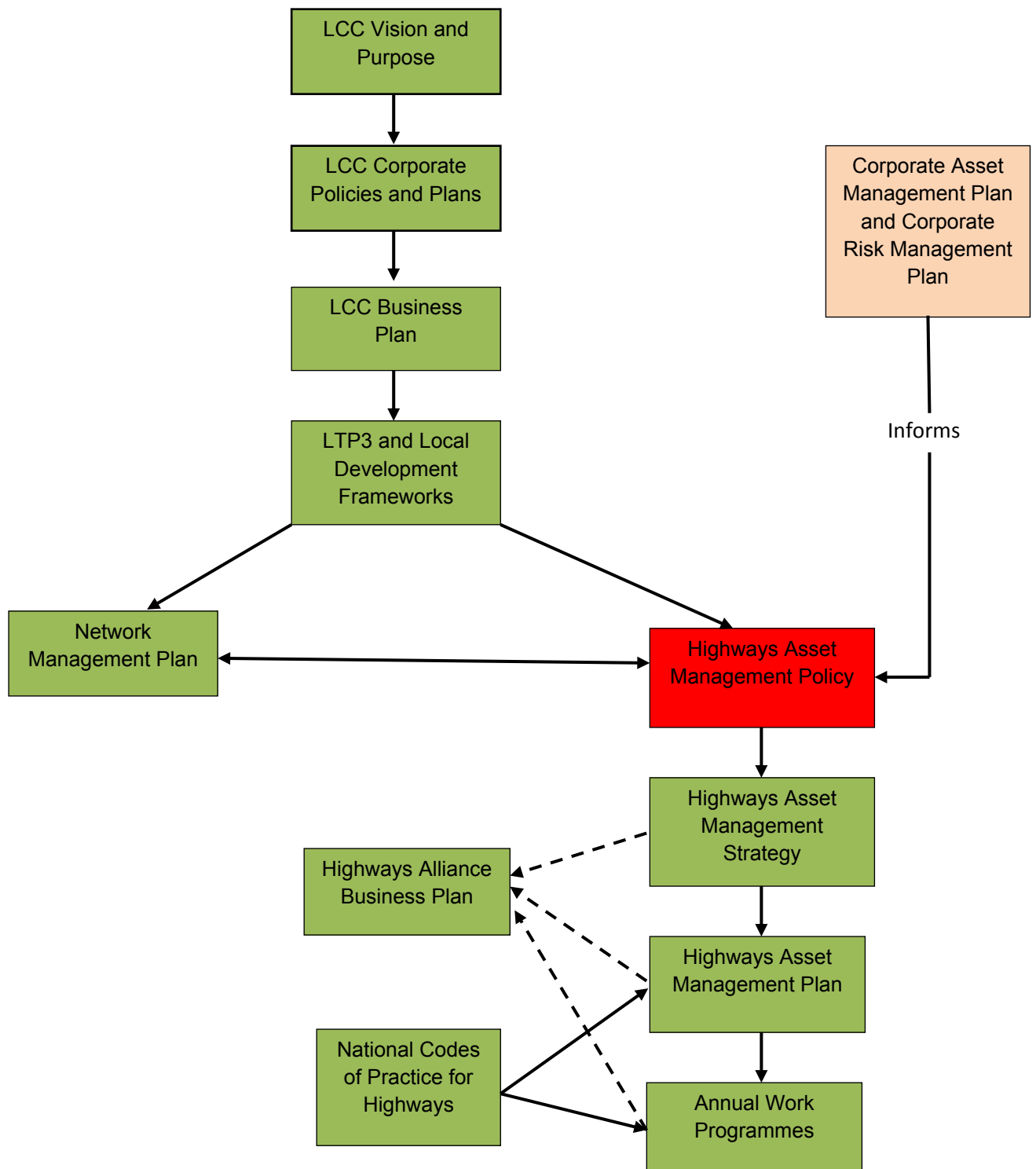
There are a number of key industries in Lincolnshire where future investment and growth are critically dependent on access to an effective highways network. Our asset management strategy will help support the Greater Lincolnshire Local Enterprise Partnership (LEP) and other partners to maximise investment opportunities for the county.

Protecting the public

This commissioning strategy covers all the works required in order to protect the communities in Lincolnshire

A well maintained highways asset is an important element in the delivery of a safe network which manages road traffic collisions to the minimum and allows vulnerable people to access support and services within their own communities. An effective asset management strategy will also support the delivery of road safety initiatives and help to minimise road traffic collisions.

The following diagram illustrates how our asset management policy, strategy and plan relate to other council plans and national guidance.



Policy Statement

Lincolnshire County Council believes that effective asset management is fundamental to the delivery of its highways service and the realisation of its long term vision and purpose.

Asset management principles enable informed decisions to be made about investment and maintenance funding; assist in the targeting of resources and the management of risks associated with our statutory duty to manage and maintain public infrastructure.

Lincolnshire County Council will ensure that the principles of highways asset management are embedded in the delivery of our highways services and the maintenance and improvement of network.

In delivering our highways asset management strategy and plan we will

- Adhere to the relevant statutory requirements for the service
- Mitigate risks of all sorts to service users and the county council
- Implement a risk based approach to reactive and planned maintenance activities in accordance with national guidelines and codes of practice.
- Take account of the environmental impact and sustainability of our plans and operations
- Communicate with our customers and service users and take account of their needs
- Maximise the return on our investment and take a long term approach based upon the whole life cost of maintaining our assets
- Prioritise works using data from engineering surveys and inspections
- Ensure that a preventative maintenance approach is adopted
- Identify areas of the network which are vulnerable to adverse weather events and take steps to mitigate this where practicable.
- Identify the pressures that new infrastructure projects and development place on our maintenance budgets
- Seek to remove redundant assets from the network